

## **Executive Summary Calibration Process Workflow Matching Calibration Document (Word)**

- **What we started with**
- **What we found**
- **What parts we replaced**
- **What parts we repaired**
- **What we flashed/reset/programmed**
- **What parts we removed and re-installed**
- **OEM service information documentation**
- **Diagnostic procedures performed**
- **Calibrations performed**
- **Functional QC test results**
- **What we did not do (pre-existing and non-related)**

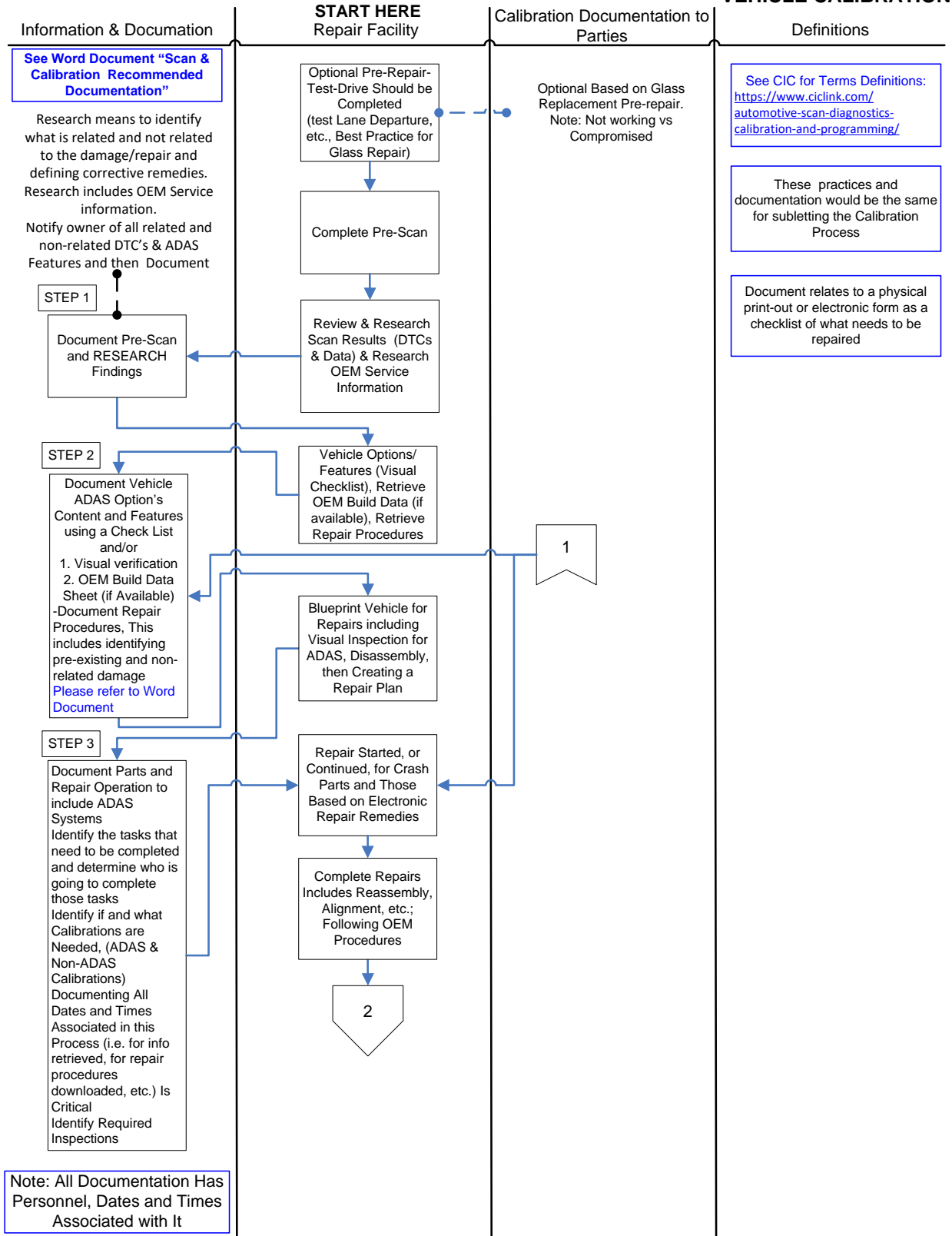
**It is recognized documentation noted below will vary for each OEM.**

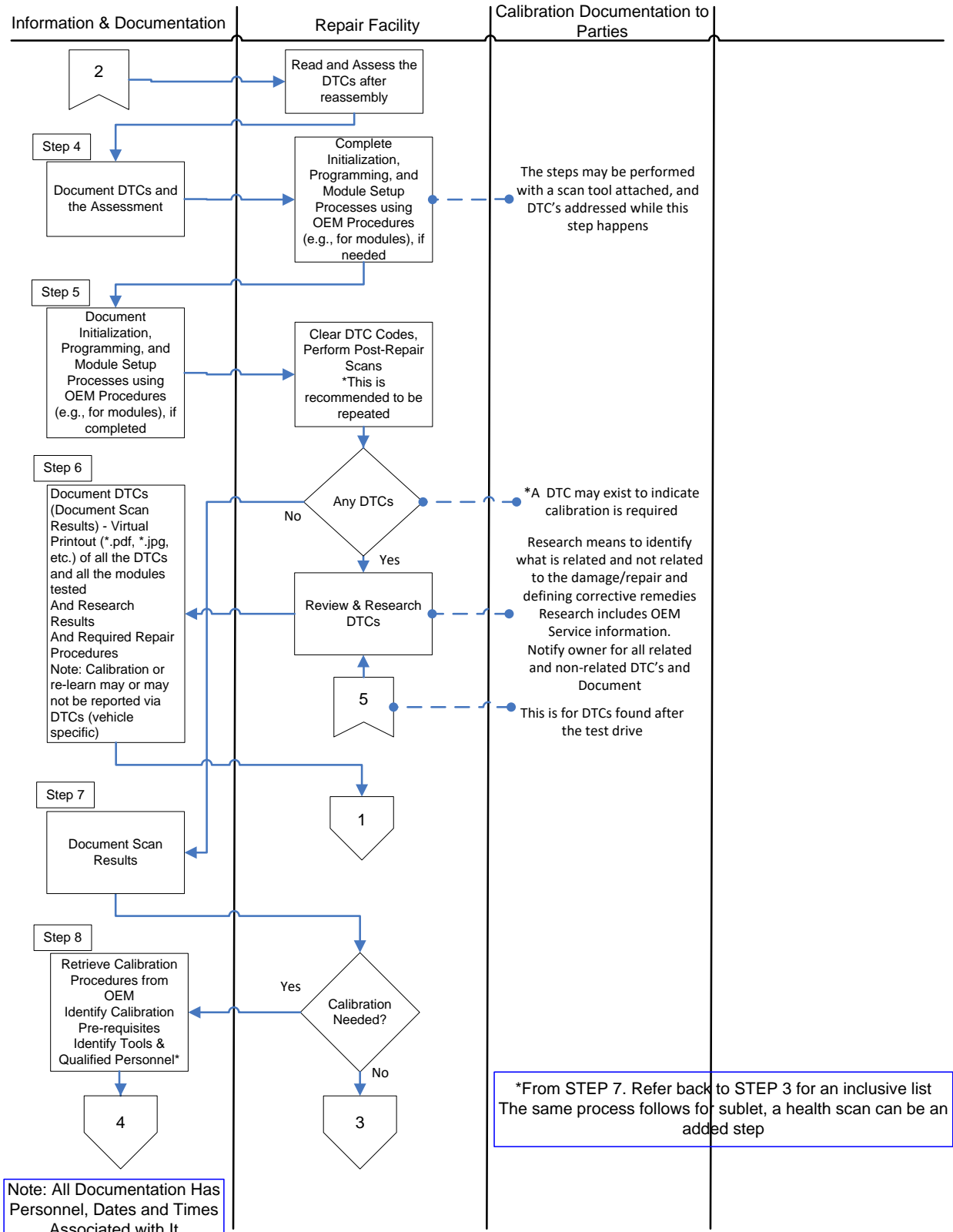
**It is important to note: Other repair, servicing or maintenance tasks may also affect the functions of the vehicle's ADAS sensors. These calibration procedures should then be followed to ensure a safe vehicle's operation.**

**For term definitions, view the CIC WIKI at:**

<https://www.ciclink.com/automotive-scan-diagnostics-calibration-and-programming/>

**VEHICLE CALIBRATION**



**VEHICLE CALIBRATION**


**VEHICLE CALIBRATION**

